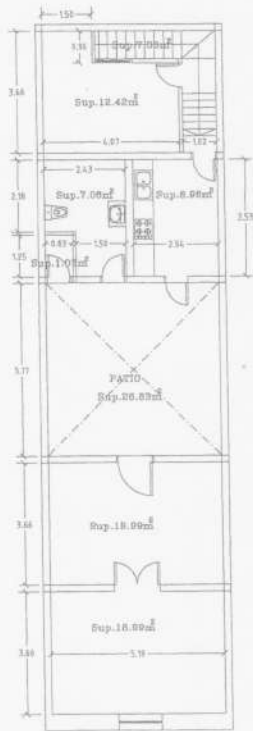


P. BAJA



P. ALTA

SUP. CONSTRUIDA  
P. BAJA: 121.63m<sup>2</sup>  
P. ALTA: 91.77m<sup>2</sup>  
TOTAL: 213.40m<sup>2</sup>

SUP. UTIL  
P. BAJA: 96.86m<sup>2</sup>  
P. ALTA: 101.34m<sup>2</sup>  
TOTAL: 198.20m<sup>2</sup>